

ANATOMIE DU CHEVAL



Soins Naturels pour Animaux "SNA"

Thérapies manuelles à la portée de tous

Programme SNA

Niveau 1 Massage de santé

Niveau 2 Ressenti et approfondissement

Niveau 3 Kinésiologie de base: "Le Testing musculaire" (Kinésiologie familiale)

Niveau 4 Kinésiologie Animale

Niveau 5 Utilisation du pendule et débiter en radiesthésie

Niveau 6 Pratique de l' EFT, émotions-résolutions

Niveau 7 Animal-Coach (Développement personnel au travers de l'animal)

Niveau 8 Se faire comprendre de son animal (Comment lui passer votre message)

Niveau 9 Communication Animale Niv. I basique (Comment recevoir sa réponse)

Niveau 10 Animal Guide ou Animal protecteur

Niveau 11 Conscience du Peuple Animal

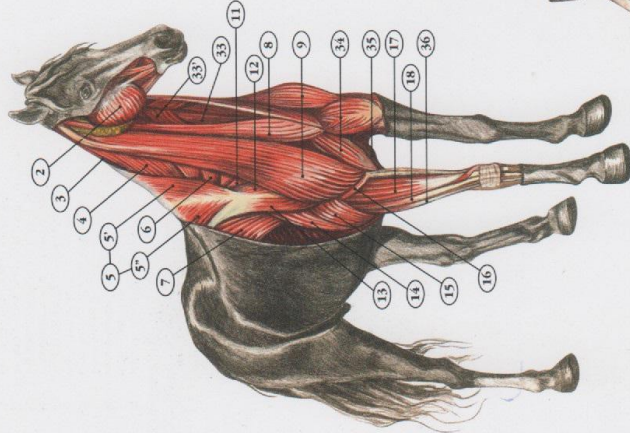
Niveau 12 Gestion de la pensée et des émotions (Evolution-Transformation)

COURS et Ateliers

www.arianed.ch/cours

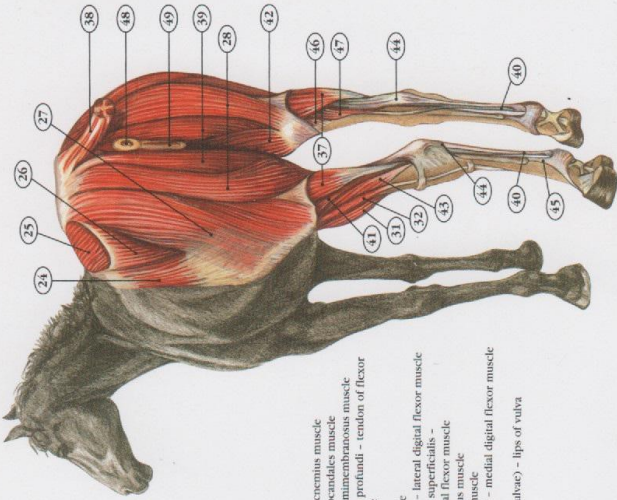
- Massage Equin: www.arianed.ch/masses-ton-cheval-cours
- Massage Canin: www.arianed.ch/masser-son-chien
- Massage Bovin: www.arianed.ch/masser-les-vaches-cours

MUSCULATURE OF THE HORSE



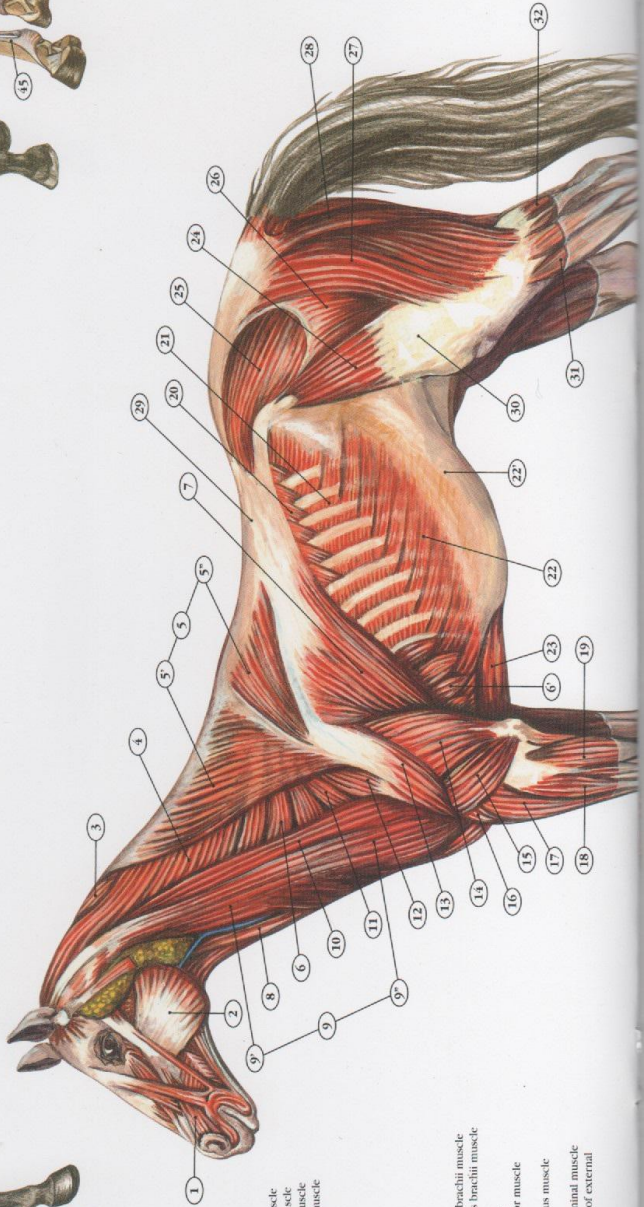
OBLIQUE VIEW

- 33 m. sternohyoideus et m. sternothyroideus - sternohyoideus and sternothyroid muscle
- 33* m. omohyoideus - omohyoideus muscle
- 34 m. pectoralis descendens - descending pectoral muscle
- 35 m. pectoralis transversus - transverse pectoral muscle
- 36 m. extensor digitorum lateralis - lateral digital extensor muscle



CAUDOLATERAL VIEW

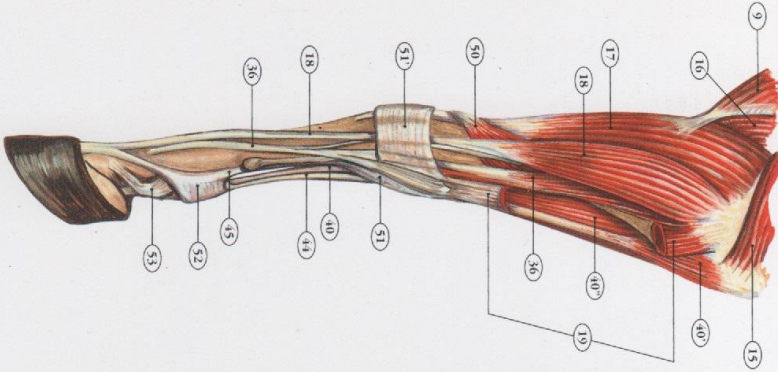
- 37 m. gastrocnemius - gastrocnemius muscle
- 38 mm. sacrocaudales - sacrocaudales muscle
- 39 m. semimembranosus - semimembranosus muscle
- 40 m. flexor digitorum profundus - tendon of flexor digitorum profundus muscle
- 41 m. soleus - soleus muscle
- 42 m. gracilis - gracilis muscle
- 43 m. flexor digitorum lateralis - lateral digital flexor muscle
- 44 tendo m. flexoris digitorum superficialis - tendon of superficial digital flexor muscle
- 45 m. interosseus - interosseus muscle
- 46 m. popliteus - popliteus muscle
- 47 m. flexor digitorum medialis - medial digital flexor muscle
- 48 anus - anus
- 49 labium posterius (abium vulvae) - lips of vulva



SUPERFICIAL VIEW

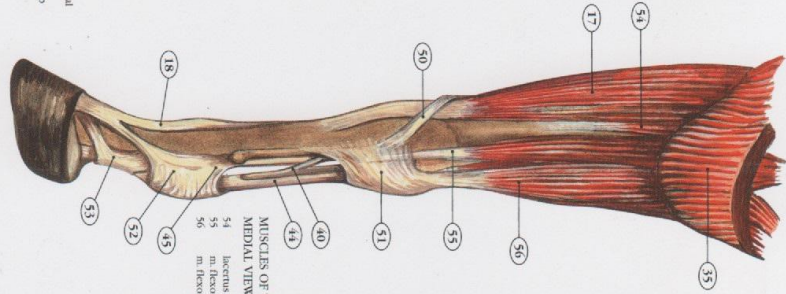
- 1 m. caninus - caninus muscle
- 2 m. masseter - masseter muscle
- 3 m. rhomboideus cervicis - cervical rhomboid muscle
- 4 m. splenius - splenius muscle
- 5 m. trapezius - trapezius muscle
- 5* pars cervicalis m. trapezii - cervical part of trapezius muscle
- 5* pars thoracica m. trapezii - thoracic part of trapezius muscle
- 6 m. serratus ventralis thoracicus - thoracic ventral serratus muscle
- 7 m. latissimus dorsi - latissimus dorsi muscle
- 8 m. sternomandibularis - sternomandibular muscle
- 9 m. brachiocephalicus - brachiocephalic muscle
- 9* m. cleidomastoideus - cleidomastoid muscle
- 9** m. cleidobrachialis - cleidobrachial muscle
- 10 m. omotraversarius - omotraversarius muscle
- 11 m. subclavius - subclavius muscle
- 11* m. suprascapularis - suprascapularis muscle
- 12 m. caput longum m. tricipitis brachii - long head of triceps brachii muscle
- 13 m. caput breve m. tricipitis brachii - lateral head of triceps brachii muscle
- 14 m. brachialis - brachialis muscle
- 15 m. extensor carpi radialis - extensor carpi radialis muscle
- 16 m. extensor digitorum communis - common digital extensor muscle
- 17 m. extensor carpi ulnaris - extensor carpi ulnaris muscle
- 18 m. serratus dorsalis caudalis - caudal part of dorsal serratus muscle
- 19 mm. intercostales externi - external intercostal muscles
- 20 m. obliquus externus abdominis - external oblique abdominal muscle
- 21 m. obliquus externus abdominis - aponeurosis of external abdominal oblique muscle
- 22
- 22*
- 23
- 24
- 25
- 26
- 27
- 28
- 29
- 30
- 31
- 32

- 23 m. pectoralis ascendens - ascending pectoral muscle
- 24 m. tensor fasciae latae - tensor fasciae latae muscle
- 25 m. gluteus medius - gluteus medius muscle
- 26 m. gluteus superficialis - gluteal superficial muscle
- 27 m. biceps femoris - biceps femoris muscle
- 28 m. rectus abdominis - rectus abdominis muscle
- 29 fascia iliaca - fascia iliaca
- 30 fascia lata - fascia lata
- 31 m. extensor digitorum longus - long digital extensor muscle
- 32 caput laterale m. gastrocnemii - lateral head of gastrocnemius muscle



MUSCLES OF THE THORACIC LIMB
LATERAL VIEW

- 40 tendo m. flexoris digitorum profundus - tendon of flexor digitorum profundus muscle
- 40* caput ulnare m. flexoris digitorum profundus - ulnar head of deep digital flexor muscle
- 40** caput humerale m. flexoris digitorum profundus - humeral head of deep digital flexor muscle
- 40*** caput humerale m. flexoris digitorum profundus - humeral head of deep digital flexor muscle
- 41 m. flexor carpi ulnaris - flexor carpi ulnaris muscle
- 42 m. flexor carpi radialis - flexor carpi radialis muscle
- 43 m. flexor digitorum superficialis - flexor digitorum superficialis muscle
- 44 m. flexor digitorum profundus - flexor digitorum profundus muscle
- 45 m. flexor digitorum profundus - flexor digitorum profundus muscle
- 46 m. flexor digitorum profundus - flexor digitorum profundus muscle
- 47 m. flexor digitorum profundus - flexor digitorum profundus muscle
- 48 m. flexor digitorum profundus - flexor digitorum profundus muscle
- 49 m. flexor digitorum profundus - flexor digitorum profundus muscle
- 50 m. flexor digitorum profundus - flexor digitorum profundus muscle
- 51 m. flexor digitorum profundus - flexor digitorum profundus muscle



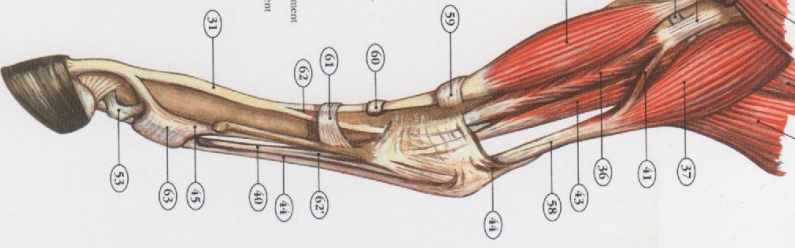
MUSCLES OF THE THORACIC LIMB
MEDIAL VIEW

- 54 biceps brachii - biceps brachii muscle
- 55 m. flexor carpi radialis - flexor carpi radialis muscle
- 56 m. flexor carpi ulnaris - flexor carpi ulnaris muscle
- 57 m. abductor pollicis longus - abductor pollicis longus muscle
- 58 m. extensor carpi radialis - extensor carpi radialis muscle
- 59 m. extensor carpi ulnaris - extensor carpi ulnaris muscle
- 60 m. extensor digitorum longus - extensor digitorum longus muscle
- 61 m. extensor digitorum longus - extensor digitorum longus muscle
- 62 m. extensor digitorum longus - extensor digitorum longus muscle
- 63 m. extensor digitorum longus - extensor digitorum longus muscle
- 64 m. extensor digitorum longus - extensor digitorum longus muscle
- 65 m. extensor digitorum longus - extensor digitorum longus muscle
- 66 m. extensor digitorum longus - extensor digitorum longus muscle
- 67 m. extensor digitorum longus - extensor digitorum longus muscle
- 68 m. extensor digitorum longus - extensor digitorum longus muscle
- 69 m. extensor digitorum longus - extensor digitorum longus muscle
- 70 m. extensor digitorum longus - extensor digitorum longus muscle
- 71 m. extensor digitorum longus - extensor digitorum longus muscle
- 72 m. extensor digitorum longus - extensor digitorum longus muscle
- 73 m. extensor digitorum longus - extensor digitorum longus muscle



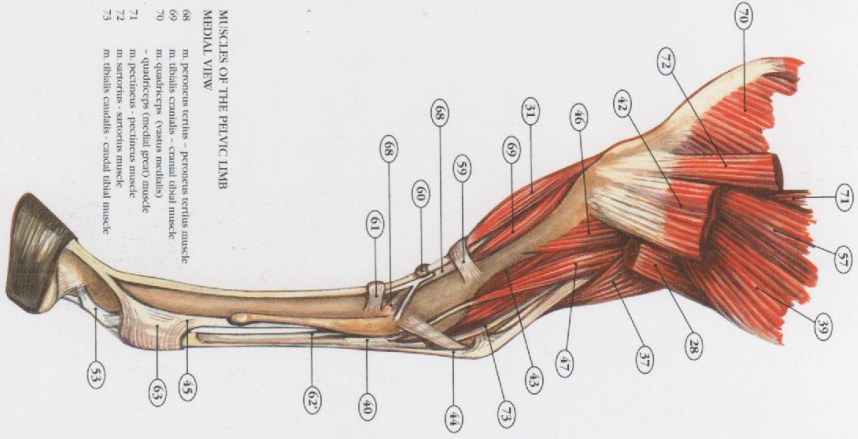
MUSCLES OF THE PELVIC LIMB
LATERAL VIEW

- 57 m. abductor - abductor muscle
- 58 tendo m. tricipitis surae - Achilles tendon
- 59 retinaculum extensorum crurale - retinaculum of the extensors of the crus
- 60 retinaculum extensorum metatarsi - retinaculum of the extensors of the metatarsals
- 61 retinaculum extensorum metatarsi - retinaculum of the extensors of the metatarsals
- 62 m. extensor digitorum longus - extensor digitorum longus muscle
- 63 m. extensor digitorum longus - extensor digitorum longus muscle
- 64 m. extensor digitorum longus - extensor digitorum longus muscle
- 65 m. extensor digitorum longus - extensor digitorum longus muscle
- 66 m. extensor digitorum longus - extensor digitorum longus muscle
- 67 m. extensor digitorum longus - extensor digitorum longus muscle
- 68 m. extensor digitorum longus - extensor digitorum longus muscle
- 69 m. extensor digitorum longus - extensor digitorum longus muscle
- 70 m. extensor digitorum longus - extensor digitorum longus muscle
- 71 m. extensor digitorum longus - extensor digitorum longus muscle

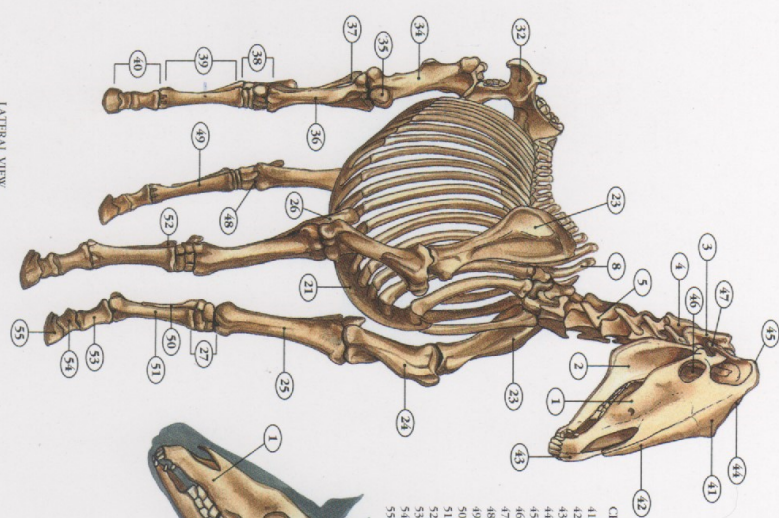


MUSCLES OF THE PELVIC LIMB
MEDIAL VIEW

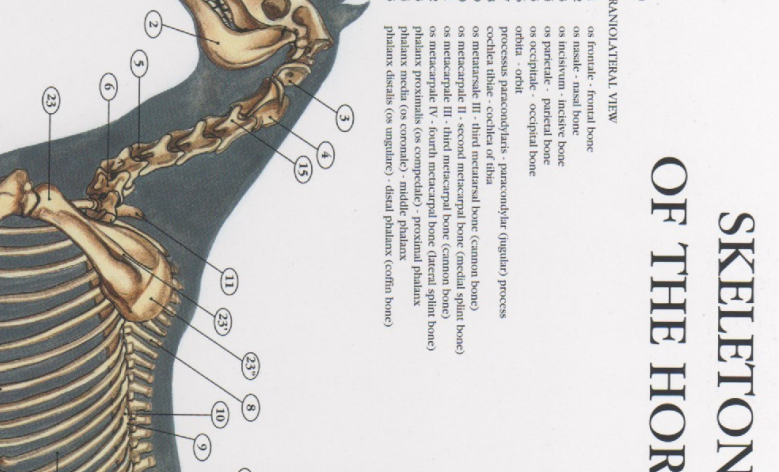
- 68 m. peroneus tertius - peroneus tertius muscle
- 69 m. fibularis cranialis - cranial fibular muscle
- 70 m. quadriceps (vasto medialis) - quadriceps (medial vastus) muscle
- 71 m. quadriceps (vasto lateralis) - quadriceps (lateral vastus) muscle
- 72 m. quadriceps (vasto medialis) - quadriceps (medial vastus) muscle
- 73 m. quadriceps (vasto lateralis) - quadriceps (lateral vastus) muscle
- 74 m. quadriceps (vasto medialis) - quadriceps (medial vastus) muscle
- 75 m. quadriceps (vasto lateralis) - quadriceps (lateral vastus) muscle
- 76 m. quadriceps (vasto medialis) - quadriceps (medial vastus) muscle
- 77 m. quadriceps (vasto lateralis) - quadriceps (lateral vastus) muscle
- 78 m. quadriceps (vasto medialis) - quadriceps (medial vastus) muscle
- 79 m. quadriceps (vasto lateralis) - quadriceps (lateral vastus) muscle
- 80 m. quadriceps (vasto medialis) - quadriceps (medial vastus) muscle
- 81 m. quadriceps (vasto lateralis) - quadriceps (lateral vastus) muscle
- 82 m. quadriceps (vasto medialis) - quadriceps (medial vastus) muscle
- 83 m. quadriceps (vasto lateralis) - quadriceps (lateral vastus) muscle
- 84 m. quadriceps (vasto medialis) - quadriceps (medial vastus) muscle
- 85 m. quadriceps (vasto lateralis) - quadriceps (lateral vastus) muscle
- 86 m. quadriceps (vasto medialis) - quadriceps (medial vastus) muscle
- 87 m. quadriceps (vasto lateralis) - quadriceps (lateral vastus) muscle
- 88 m. quadriceps (vasto medialis) - quadriceps (medial vastus) muscle
- 89 m. quadriceps (vasto lateralis) - quadriceps (lateral vastus) muscle
- 90 m. quadriceps (vasto medialis) - quadriceps (medial vastus) muscle
- 91 m. quadriceps (vasto lateralis) - quadriceps (lateral vastus) muscle
- 92 m. quadriceps (vasto medialis) - quadriceps (medial vastus) muscle
- 93 m. quadriceps (vasto lateralis) - quadriceps (lateral vastus) muscle
- 94 m. quadriceps (vasto medialis) - quadriceps (medial vastus) muscle
- 95 m. quadriceps (vasto lateralis) - quadriceps (lateral vastus) muscle
- 96 m. quadriceps (vasto medialis) - quadriceps (medial vastus) muscle
- 97 m. quadriceps (vasto lateralis) - quadriceps (lateral vastus) muscle
- 98 m. quadriceps (vasto medialis) - quadriceps (medial vastus) muscle
- 99 m. quadriceps (vasto lateralis) - quadriceps (lateral vastus) muscle
- 100 m. quadriceps (vasto medialis) - quadriceps (medial vastus) muscle



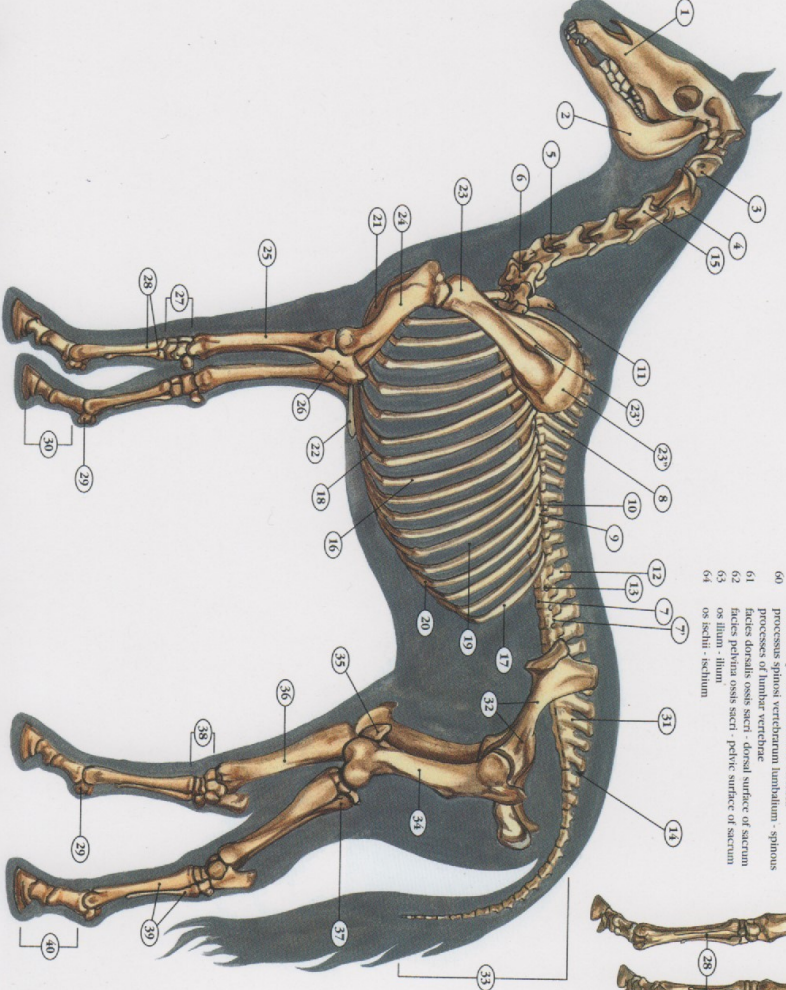
SKELETON OF THE HORSE



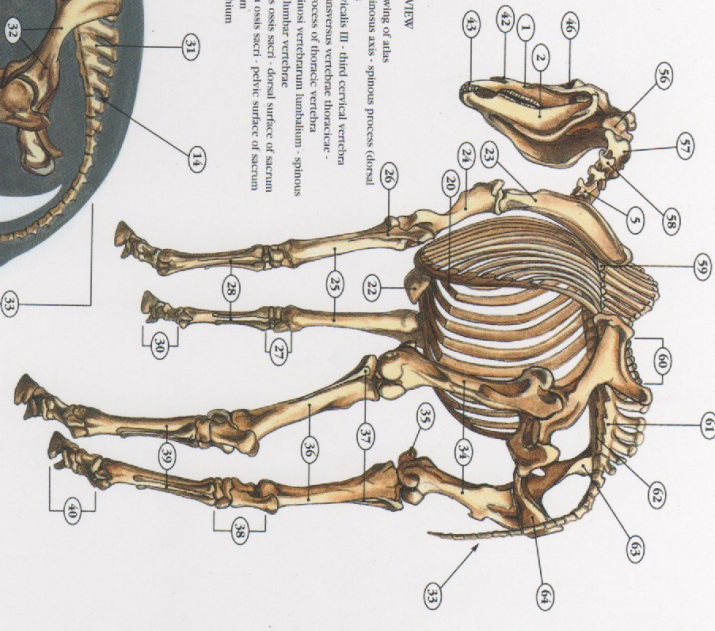
- LATERAL VIEW**
- 1 maxilla - maxilla
 - 2 mandibula - mandible
 - 3 atlas - atlas
 - 4 axis - axis
 - 5 vertebra cervicalis V - fifth cervical vertebra
 - 6 vertebra cervicalis VII - seventh cervical vertebra
 - 7 corpus vertebrae - vertebral body
 - 8 processus spinosus - spinous process
 - 9 tuberculum costae - costal tubercle (tubercle of the rib)
 - 10 vertebra thoracica I - first thoracic vertebra
 - 11 vertebra lumbalis I - first lumbar vertebra
 - 12 foramen intervertebrale - intervertebral foramen
 - 13 spatium intervertebrale - intervertebral space
 - 14 processus transversi - transverse process
 - 15 costa XVIII - eighteenth rib
 - 16 cartilago costalis - cartilage of rib
 - 17 spatium intercostale - intercostal space
 - 18 arcus costalis - costal arch
 - 19 scapula - scapula
 - 20 cartilago stipitiaria - acromioclavicular cartilage
 - 21 spina scapulae - spine of scapula
 - 22 cartilago scapulae - scapular cartilage
 - 23 humerus - humerus
 - 24 ulna - ulna
 - 25
 - 26



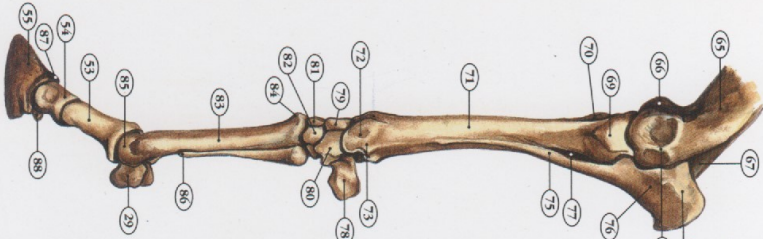
- CRANIO-LATERAL VIEW**
- 41 os frontale - frontal bone
 - 42 os nasale - nasal bone
 - 43 os incisivum - incisive bone
 - 44 os parietale - parietal bone
 - 45 os occipitale - occipital bone
 - 46 orbita - orbit
 - 47 processus paracymbularis - paracymbular (figular) process
 - 48 cochlea tibiae - cochlea of tibia
 - 49 metatarsale III - third metatarsal bone (cannon bone)
 - 50 os metacarpale II - second metacarpal bone (medial splint bone)
 - 51 os metacarpale III - third metacarpal bone (cannon bone)
 - 52 os metacarpale IV - fourth metacarpal bone (lateral splint bone)
 - 53 phalanx proximalis (os coronae) - middle phalanx
 - 54 phalanx media (os ungulae) - distal phalanx (coffin bone)
 - 55 phalanx distalis (os ungulae) - distal phalanx (coffin bone)



- CAUDO-LATERAL VIEW**
- 56 ala atlantis - wing of atlas
 - 57 processus spinosus axis - spinous process (dorsal vertebra cervicalis III - third cervical vertebra)
 - 58 processus transversus vertebrae thoracicae - transverse process of thoracic vertebra
 - 59 processus spinosus vertebrae lumbalium - spinous process of lumbar vertebrae
 - 60 facies dorsalis ossis sacri - dorsal surface of sacrum
 - 61 facies pelvina ossis sacri - pelvic surface of sacrum
 - 62 os ilium - ilium
 - 63 os ischium - ischium
 - 64
 - 65
 - 66
 - 67
 - 68
 - 69
 - 70
 - 71
 - 72
 - 73
 - 74
 - 75
 - 76
 - 77
 - 78
 - 79
 - 80
 - 81
 - 82
 - 83
 - 84
 - 85
 - 86
 - 87
 - 88
 - 89
 - 90
 - 91
 - 92
 - 93
 - 94
 - 95
 - 96
 - 97
 - 98
 - 99
 - 100
 - 101
 - 102
 - 103
 - 104
 - 105
 - 106
 - 107
 - 108
 - 109
 - 110
 - 111
 - 112
 - 113
 - 114
 - 115
 - 116
 - 117
 - 118
 - 119
 - 120
 - 121
 - 122
 - 123
 - 124
 - 125
 - 126
 - 127
 - 128
 - 129
 - 130
 - 131
 - 132
 - 133
 - 134
 - 135
 - 136
 - 137
 - 138
 - 139
 - 140

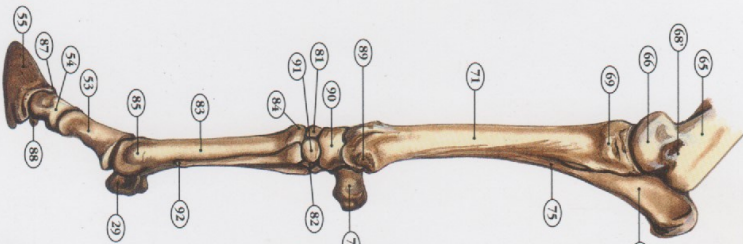


- 27 ossa carpi - carpal bones
- 28 ossa metacarpi - metacarpal bones
- 29 ossa sesamoidea proximalia - proximal sesamoid bones
- 30 ossa sesamoidea distalia - distal sesamoid bones
- 31 os sacrum - sacrum
- 32 os coxae - hip bone (pubic or coxal bone)
- 33 vertebrae caudales - caudal vertebrae
- 34 os femoris - femur
- 35 patella - patella (knee cap)
- 36 os fibulae - fibula
- 37 fibula - fibula
- 38 ossa tarsi - tarsal bones
- 39 ossa metatarsalia - metatarsal bones
- 40 ossa digiti pedis - bones of hind leg digit (phalanges of hind foot)



SKELETON OF THE THORACIC LIMB
LATERAL VIEW

- 65 corpi humeri - body of humerus
- 66 condylus humeri - condyle of humerus
- 67 tuberculum - tuberosity of humerus
- 68 epicondylus lateralis - lateral epicondyle
- 69 epicondylus medialis - medial epicondyle
- 70 corpus radii - head of radius
- 71 corpus ulnae - body of ulna
- 72 processus styloideus lateralis - lateral process of the styloid process
- 73 processus styloideus medialis - medial process of the styloid process
- 74 processus antrorotari - anterior process of the radius
- 75 corpus ulnae - body of ulna
- 76 obliquum - olecranon
- 77 spatium interosseum antibrachii - interosseous space of forearm
- 78 corpus osseum - accessory carpal bone
- 79 os carpi intermedium - intermediate carpal bone
- 80 os carpi ulnare - ulnar carpal bone
- 81 os carpi II - third carpal bone (cannon bone)
- 82 corpus ossis metacarpi III - body of the third metacarpal bone (cannon bone)
- 83 tubercula ossis metacarpi III - tubercles of the third metacarpal bone (cannon bone)
- 84 corpus ossis metacarpi IV - head of the fourth metacarpal bone (lateral splint bone)
- 85 processus extensorius phalangis distalis - extensor process of coffin bone
- 86 os sesamoideum distale - distal sesamoid (navicular) bone
- 87
- 88

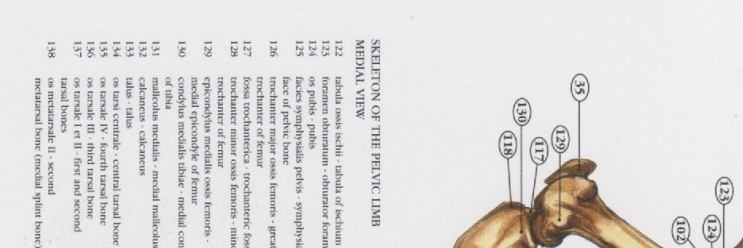
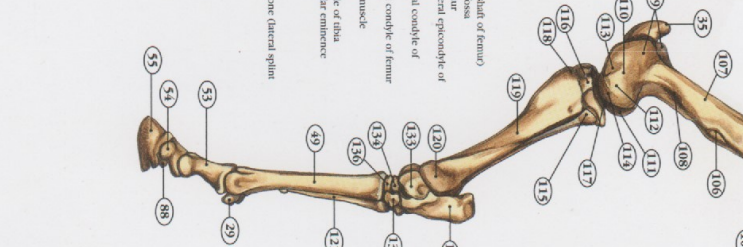


SKELETON OF THE THORACIC LIMB
MEDIAL VIEW

- 89 processus styloideus medialis - medial styloid process
- 90 os carpi radiale - radial carpal bone
- 91 os carpi II - second carpal bone
- 92 corpus ossis metacarpi II - body of the second metacarpal bone (medial splint bone)
- 65
- 66
- 67
- 68
- 69
- 70
- 71
- 72
- 73
- 74
- 75
- 76
- 77
- 78
- 79
- 80
- 81
- 82
- 83
- 84
- 85
- 86
- 87
- 88

SKELETON OF THE PELVIC LIMB
LATERAL VIEW

- 93 crista iliaca - iliac crest
- 94 tuber sacrale - sacral tubercle
- 95 tuber coxae - coxal tubercle
- 96 ala ossis ilii - wing (ala) of ilium
- 97 corpus ossis ilii - body of ilium
- 98 incisura ischioacetabularis - greater sciatic foramen
- 99 incisura ischioanal - lesser sciatic notch
- 100 ementia iliopectinea - iliopectineal eminence
- 101 acetabulum - acetabulum
- 102 ementia iliofemorale - iliofemoral eminence
- 103 corpus ossis femoris - head of femur
- 104 pars cranialis trochantinis majus - cranial part of greater trochanter
- 105 pars caudalis trochantinis majus - caudal part of greater trochanter
- 106 radius part of greater trochanter
- 107 corpus ossis femoris - body of femur (shaft of femur)
- 108 fossa supracondylaris - supracondylar fossa
- 109 trochanter ossis femoris - lateral epicondyle of femur
- 110 trochanter ossis femoris - medial epicondyle of femur
- 111 condylus lateralis - lateral condyle of femur
- 112 condylus medialis - medial condyle of femur
- 113 fossa m. poplitei - fossa for popliteus muscle
- 114 fossa m. poplitei - extensor fossa
- 115 condylus lateralis tibiae - lateral condyle of tibia
- 116 ementia intercondylaris - intercondylar eminence
- 117 subrotula tibiae - tibial tuberosity
- 118 corpus tibiae - body of tibia
- 119 malleolus lateralis - lateral malleolus
- 120 malleolus medialis - medial malleolus
- 121 tubercula tibiae IV - fourth metatarsal bone (lateral splint bone)
- 122
- 123
- 124
- 125
- 126
- 127
- 128
- 129
- 130
- 131
- 132
- 133
- 134
- 135
- 136
- 137
- 138
- 139
- 140
- 141
- 142
- 143
- 144
- 145
- 146
- 147
- 148
- 149
- 150
- 151
- 152
- 153
- 154
- 155
- 156
- 157
- 158

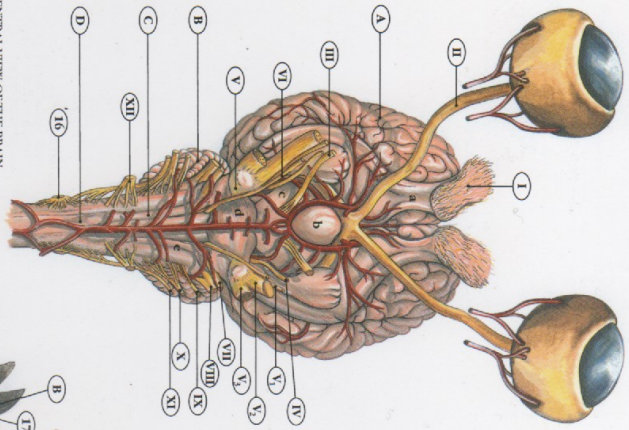


SKELETON OF THE PELVIC LIMB
MEDIAL VIEW

- 122 tibia ossis ischii - tibia of ischium
- 123 foramen obturatorium - obturator foramen
- 124 os pubis - pubis
- 125 facies symphysealis pelvis - symphyseal surface of the pubis
- 126 trochanter minor ossis femoris - greater trochanter of femur
- 127 trochanter major ossis femoris - lesser trochanter of femur
- 128 trochanter minor ossis femoris - minor trochanter of femur
- 129 trochanter major ossis femoris - major trochanter of femur
- 130 condylus medialis tibiae - medial condyle of tibia
- 131 malleolus medialis - medial malleolus
- 132 malleolus lateralis - lateral malleolus
- 133 tubercula calcanei - calcaneal tubercles
- 134 os tarsi centrale - central tarsal bone
- 135 os tarsi III - third tarsal bone
- 136 os tarsi II - first and second tarsals
- 137 os metatarsale II - second metatarsal bone (medial splint bone)
- 138
- 139
- 140
- 141
- 142
- 143
- 144
- 145
- 146
- 147
- 148
- 149
- 150
- 151
- 152
- 153
- 154
- 155
- 156
- 157
- 158

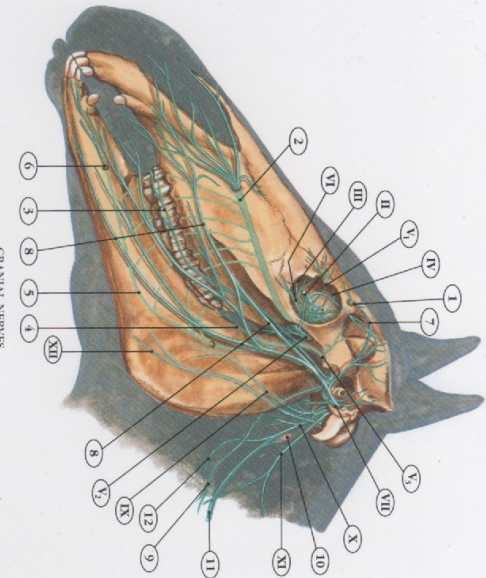


NERVOUS SYSTEM OF THE HORSE

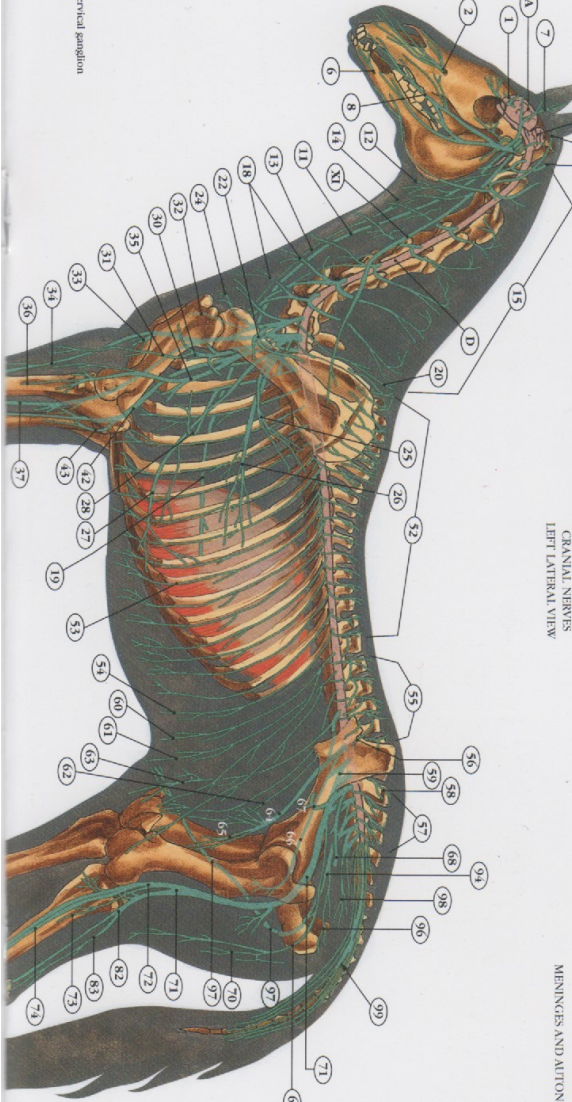


VENTRAL VIEW OF THE BRAIN

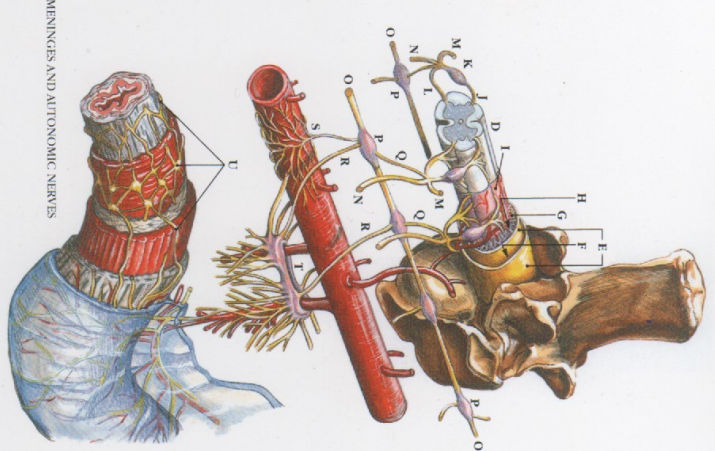
- I n. olfactorii - olfactory nerves
- II n. optici - optic nerve
- III n. oculomotorius - oculomotor nerve
- IV n. trochlearis - trochlear nerve
- V n. trigeminalis - trigeminal nerve
- V₁ n. ophthalmicus - ophthalmic nerve
- V₂ n. maxillaris - maxillary nerve
- V₃ n. mandibularis - mandibular nerve
- VI n. abducens - abducens nerve
- VII n. facialis - facial nerve
- VIII n. vestibulocochlearis - vestibulocochlear nerve
- IX n. glossopharyngeus - glossopharyngeal nerve
- X n. vagus - vagus nerve
- XI n. accessorius - accessory nerve
- XII n. hypoglossus - hypoglossal nerve



CRANIAL NERVES LEFT LATERAL VIEW



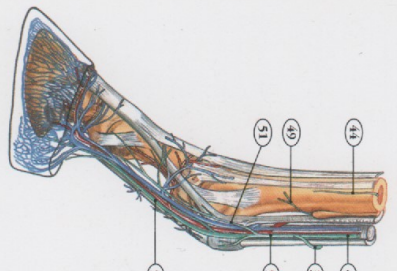
- 1 n. supraorbitalis - supraorbital nerve
- 2 n. ophthalmicus - ophthalmic nerve
- 3 n. buccialis - buccal nerve
- 4 n. linguales - lingual nerve
- 5 n. alveolaris inferior - inferior alveolar nerve
- 6 n. alveolaris superior - superior alveolar nerve
- 7 n. infraorbitalis - infraorbital nerve
- 8 ramus buccalis - buccal branch of facial nerve
- 9 ramus colli - cervical branch of facial nerve
- 10 ganglion cervicale craniale - (sympathetic) cranial cervical ganglion
- 11 n. rami vagosympathetici - vagosympathetic trunk
- 12 n. laryngeus cranialis - cranial laryngeal nerve
- 13 n. laryngeus recurrens - recurrent laryngeal nerve



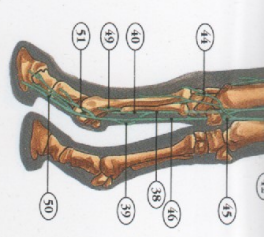
MENINGES AND AUTONOMIC NERVES

- D meninges epineurales - spinal cord
- E dura mater epineurales - spinal dura mater
- F tunica epineuralis - epineurial cavity
- G arachnoidea epineurales - spinal arachnoid
- H cavaum subarachnoideum - subarachnoid cavity
- I plexus choroideus - choroid plexus
- J radix dorsalis - dorsal root of spinal nerve
- K ganglion spinale - spinal ganglion
- L radix ventralis - ventral root of spinal nerve
- M ramus dorsalis - dorsal branch of spinal nerve
- N ramus ventralis - ventral branch of spinal nerve
- O plexus plexus - plexus
- P ganglion trunci sympathetici - thoracic (paravertebral) sympathetic ganglion
- Q rami communicantes - communicating branch
- R rami spinales - spinal branches
- S plexus plexus - plexus
- T plexus plexus - plexus
- U plexus plexus - plexus

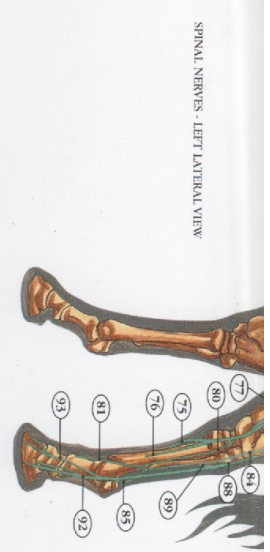
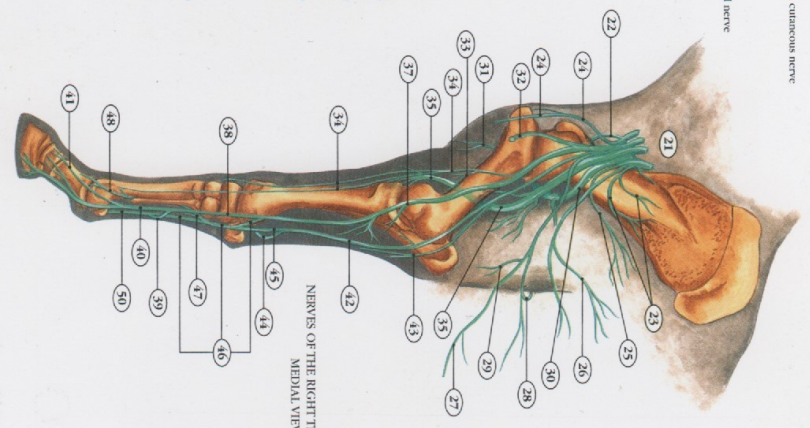
- 14 n. laryngeus cranialis - caudal laryngeal nerve
- 15 m. cervicatus - cervical nerve
- 16 n. axillaris - axillary nerve
- 17 n. axillaris medialis - great axillary nerve
- 18 m. supracapularis - suprascapular nerve
- 19 n. pectoralis - pectoral nerve
- 20 n. cervicalis VIII - eighth cervical nerve
- 21 n. pectoralis profundus - deep pectoral nerve
- 22 m. subscapularis - subscapular nerve
- 23 m. pectorales craniales - cranial pectoral nerves
- 24 m. pectorales caudales - caudal pectoral nerve
- 25 n. thoracofovealis - thoracofoveal nerve
- 26 n. thoracicus longus - long thoracic nerve
- 27 n. intercostobrachialis - intercostobrachial nerve
- 28 m. pectorales caudales - caudal pectoral nerves
- 29 n. axillaris - axillary nerve
- 30 n. cutaneus antibrachii cranialis - cranial antibrachial cutaneous nerve
- 31 n. cutaneus antibrachii medialis - medial antibrachial cutaneous nerve
- 32 n. cutaneus antibrachii lateralis - lateral antibrachial cutaneous nerve
- 33 ramus muscularis - distalis nervi musculocutanei - musculocutaneous nerve
- 34 n. cutaneus antibrachii medialis - medial antibrachial cutaneous nerve
- 35 n. radialis - radial nerve
- 36 n. cutaneus antibrachii lateralis - lateral antibrachial cutaneous nerve
- 37 n. palmaris medialis - medial palmar nerve
- 38 n. palmaris medialis - communicating branch
- 39 n. palmaris medialis - communicating branch (between # 38 and # 40)
- 40 n. digitorum palmaris medialis - medial (palmar) digital nerve
- 41 n. digitorum palmaris lateralis - lateral (palmar) digital nerve
- 42 n. ulnaris - ulnar nerve
- 43 n. cutaneus antibrachii caudalis - caudal antibrachial cutaneous nerve
- 44 ramus palmaris - palmar branch of ulnar nerve
- 45 ramus dorsalis - dorsal branch of ulnar nerve
- 46 n. medianus - deep branch (of # 40)
- 47 n. medianus profundus - deep branch (of # 40)
- 48 n. metacarpi palmaris II - metacarpus palmaris II -
- 49 n. metacarpi palmaris III - metacarpus palmaris III -
- 50 n. lateral palmar metacarpal nerve
- 51 n. lateral palmar digital nerve
- 52 ramus dorsalis - dorsal branch (of # 50)



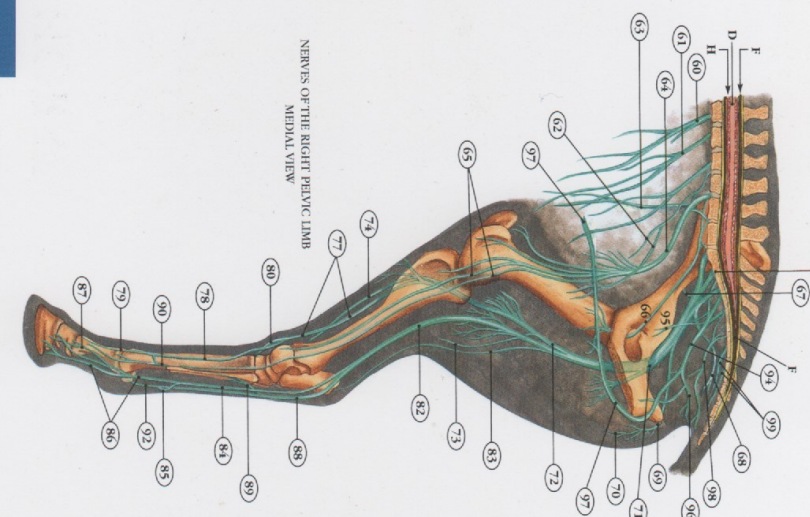
LEFT FOREFOOT - LATERAL VIEW



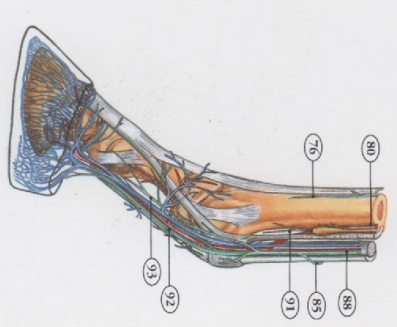
NERVES OF THE RIGHT THORACIC LIMB
MEDIAL VIEW



NERVES OF THE RIGHT PELVIC LIMB
MEDIAL VIEW



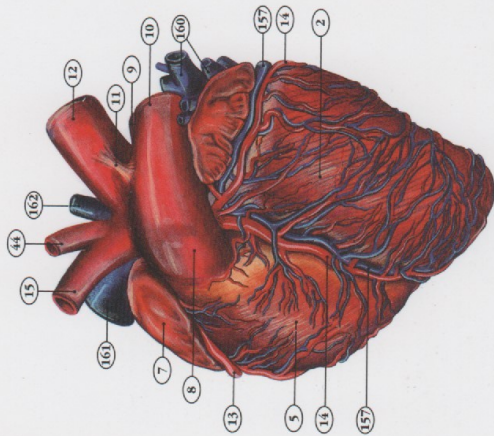
- 65 n. saphenous - saphenous nerve
- 66 n. obturatorius - obturator nerve
- 67 n. gluteus cranialis - cranial gluteal nerve
- 68 n. gluteus caudalis - caudal gluteal nerve
- 69 caudal femoral cutaneous nerve
- 70 m. clunium caudales - caudal clunial nerves
- 71 n. ischiadicus - sciatic nerve (saphenous nerve)
- 72 n. peroneus communis -
- 73 n. cutaneus peroneus (saphenous) nerve
- 74 n. cutaneus peroneus lateralis - lateral saphenous nerve
- 75 superficial peroneal (or fibular) nerve
- 76 ramus dorsalis - dorsal branch (of # 74)
- 77 n. metatarsus dorsalis I - deep peroneal (or fibular) nerve
- 78 n. metatarsus dorsalis II -
- 79 n. metatarsus dorsalis III -
- 80 n. metatarsus dorsalis III -
- 81 n. digitorum dorsalis I -
- 82 n. tibialis - tibial nerve
- 83 n. cutaneus surae caudalis - caudal sural cutaneous nerve
- 84 n. plantaris medialis - medial plantar nerve
- 85 n. plantaris medialis - communicating branch (between # 84 and # 88)
- 86 n. digitorum plantaris medialis -
- 87 n. digitorum plantaris medialis -
- 88 ramus dorsalis - dorsal branch (of # 86)
- 89 n. medianus - deep branch (of # 88)
- 90 n. metacarpi plantaris II -
- 91 n. metacarpi plantaris III -
- 92 n. metacarpi plantaris III -
- 93 n. lateral plantar metatarsal nerve
- 94 n. pudendus - pudendal nerve
- 95 n. pudendus - (parasymphysis) pelvic nerves
- 96 n. perinealis - perineal nerves
- 97 m. rectices caudales - caudal rectal nerves
- 98 m. rectices caudales - caudal rectal nerves
- 99 m. rectices caudales - caudal rectal nerves



LEFT HINDFOOT - LATERAL VIEW



VASCULAR SYSTEM OF THE HORSE

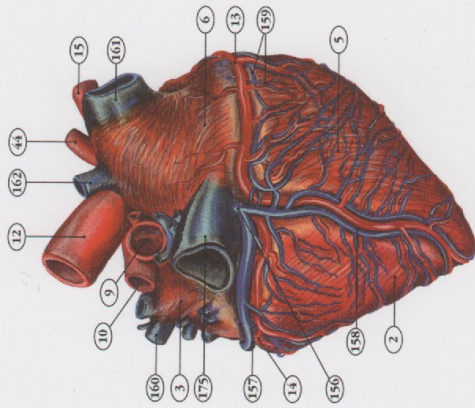


LEFT VIEW OF THE HEART: AURICULAR SURFACE

1. lin. parotidi - parotid lymph nodes
2. lin. mandibulares - mandibular lymph nodes
3. lin. cervicales superficiales - superficial cervical lymph nodes
4. lin. cervicales profundae - deep cervical lymph nodes
5. lin. subiliaci - subiliac lymph nodes
6. lin. inguinales superficiales (lin. scrotales/mammarii) - superficial inguinal (scrotal/mammary) lymph nodes
7. cor. heart
8. ventriculus sinister - left ventricle
9. atrium sinistrum - left atrium
10. auricula sinistra - left auricle
11. ventriculus dexter - right ventricle
12. atrium dextrum - right atrium
13. truncus pulmonalis - pulmonary trunk
14. pulmonalis dextra - right pulmonary artery
15. pulmonalis sinistra - left pulmonary artery
16. ligamentum arteriosum - ligamentum arteriosum
17. a. coronaria dextra - right coronary artery
18. a. coronaria sinistra - left coronary artery
19. truncus brachiocephalicus - brachiocephalic trunk
20. a. carotis communis sinistra - left common carotid artery
21. a. carotis interna - internal carotid artery & vein
22. a. carotis externa - external carotid artery
23. transversea linguofacialis - linguofacial trunk & vein
24. a. lingualis - lingual artery & vein
25. a. sublingualis - sublingual artery
26. a. submentalis - submental artery
27. a. v. labialis inferior - inferior labial artery & vein
28. a. v. labialis superior - superior labial artery & vein
29. a. v. lateralis - lateral labial artery & vein

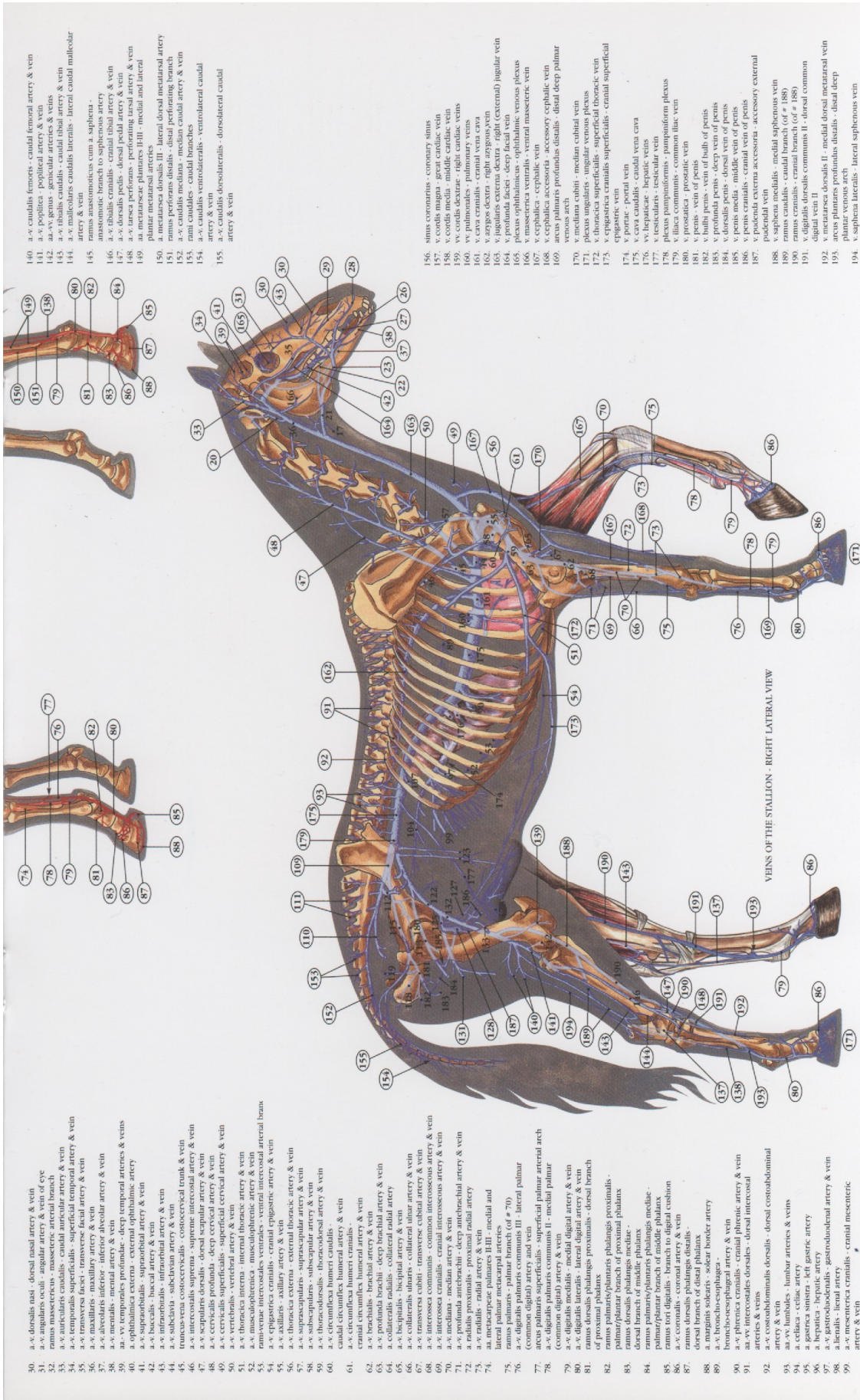


SUPERFICIAL LYMPH NODES



RIGHT VIEW OF THE HEART: ATRIAL SURFACE

100. aa. jejunales - jejunal arteries
101. ramus colicus - colic branch
102. a. colica dextra - right colic artery
103. a. colica sinistra - left colic artery
104. a. v. mesenterica caudalis - caudal mesenteric artery & vein
105. a. colica sinistra - left colic artery
106. a. recalis cranialis - cranial rectal artery
107. a. recalis caudalis - caudal rectal artery
108. a. v. mesenterica cranialis - cranial mesenteric artery & vein
109. a. v. iliaca interna - internal iliac artery & vein
110. a. v. iliaca caudalis - caudal iliac artery & vein
111. rami sacrales - sacral branches
112. a. v. glutea cranialis - cranial gluteal artery & vein
113. a. v. glutea caudalis - caudal gluteal artery & vein
114. a. v. circumflexa ilium profunda - deep circumflex iliac artery & vein
115. a. v. profunda interna - internal pudendal artery & vein
116. a. umbilicalis - umbilical artery
117. a. vaginalis - vaginal artery
118. a. v. perimetris venales - ventral perineal artery & vein
119. a. v. perimetris arteriales - dorsal perineal artery & vein
120. ramus labialis dorsalis - dorsal labial branch
121. a. bulbis vestibuli - artery of vestibular bulb
122. a. v. iliaca externa - external iliac artery & vein
123. a. v. circumflexa ilium profunda - deep circumflex iliac artery & vein
124. a. uretra - ureteric artery
125. a. v. profunda femoris - deep femoral artery and vein
126. truncus pudendopigisticus - pudendopigistic trunk
127. a. v. epigastrica caudalis - caudal epigastric artery & vein
128. a. v. pudenda externa - external pudendal artery & vein
129. a. v. pudenda interna - internal pudendal artery & vein
130. mammae craniales - cranial mammary artery
131. a. v. circumflexa femoris medialis - medial circumflex femoral artery & vein
132. a. v. femoralis - femoral artery & vein
133. a. v. femoralis lateralis - lateral circumflex femoral artery & vein
134. a. saphena - saphenous artery
135. ramus cranialis - cranial branch (of # 134)
136. ramus caudalis - caudal branch (of # 134)
137. a. v. plantaris medialis - medial plantar artery & vein
138. a. v. plantaris lateralis - lateral plantar artery & vein
139. a. v. genis descendens - descending genicular artery & vein



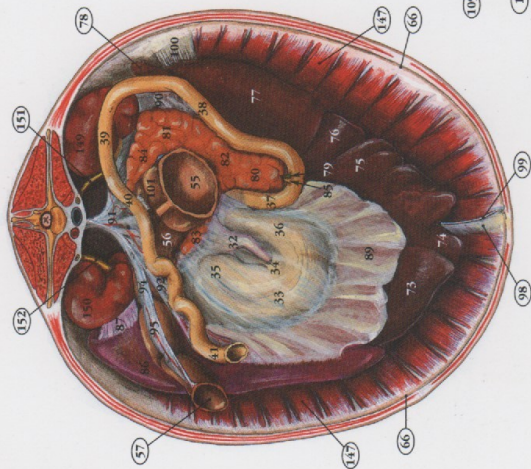
- 140. a.-v. caudalis femoris - caudal femoral artery & vein
- 141. a.-v. poplitea - popliteal artery & vein
- 142. a.-v. genis - genicular arteries & veins
- 143. a.-v. tibialis caudalis - caudal tibial artery & vein
- 144. a.-v. tibialis lateralis - lateral caudal malleolar artery & vein
- 145. ramus anastomoticus cum a. splenica - anastomotic branch to splenic artery
- 146. a.-v. tibialis cranialis - cranial tibial artery & vein
- 147. a.-v. dorsalis pedis - dorsal pedal artery & vein
- 148. a.-v. plantaris - plantar artery & vein
- 149. a. metatarsae plantares III - medial and lateral plantar metatarsal arteries
- 150. a. metatarsae dorsalis III - lateral dorsal metatarsal artery
- 151. ramus perforans distalis - distal perforating branch
- 152. a.-v. plantaris caudalis - caudal artery & vein
- 153. ramus caudalis - caudal branches
- 154. a.-v. caudalis ventrodorsalis - ventrodorsal caudal artery & vein
- 155. a.-v. caudalis dorsohumeralis - dorsohumeral caudal artery & vein

- 156. sinus coronarius - coronary sinus
- 157. v. cordis magna - great cardiac vein
- 158. v. cordis parva - small cardiac vein
- 159. v. cordis dextra - right cardiac veins
- 160. vv. pulmonales - pulmonary veins
- 161. v. cava cranialis - cranial vena cava
- 162. v. azgosus dextra - right azgosus vein
- 163. v. jugularis externa dextra - right (external) jugular vein
- 164. v. jugularis interna dextra - right (internal) jugular vein
- 165. plexus ophthalmicus - ophthalmic venous plexus
- 166. v. masseterica ventralis - ventral masseteric vein
- 167. v. cephalica - cephalic vein
- 168. v. cephalica accessoria - accessory cephalic vein
- 169. v. pectus profundus distalis - distal deep palmar venous arch
- 170. v. mediana cubiti - median cubital vein
- 171. plexus jugularis - jugular venous plexus
- 172. v. thoracica superficialis - superficial thoracic vein
- 173. v. epigastrica cranialis superficialis - cranial superficial epigastric vein
- 174. v. portae - portal vein
- 175. v. cava caudalis - caudal vena cava
- 176. vv. hepaticae - hepatic veins
- 177. v. testicularis - testicular vein
- 178. v. vesicularis - vesicular vein
- 179. plexus cavernosus - cavernosiform plexus
- 180. v. iliaca communis - common iliac vein
- 181. v. penis - vein of penis
- 182. v. bulbis penis - vein of bulb of penis
- 183. v. dorsalis penis - dorsal vein of penis
- 184. v. dorsalis penis - dorsal vein of penis
- 185. v. penis media - middle vein of penis
- 186. v. penis cranialis - cranial vein of penis
- 187. v. putredine externa accessoria - accessory external pudendal vein
- 188. v. putredine interna - internal pudendal vein
- 189. ramus caudalis - caudal branch (of # 188)
- 190. ramus cranialis - cranial branch (of # 188)
- 191. v. digitalis dorsalis communis II - dorsal common digital vein II
- 192. v. metatarsae dorsalis II - medial dorsal metatarsal vein
- 193. v. metatarsae profundus distalis - distal deep plantar venous arch
- 194. v. splenica lateralis - lateral splenic vein



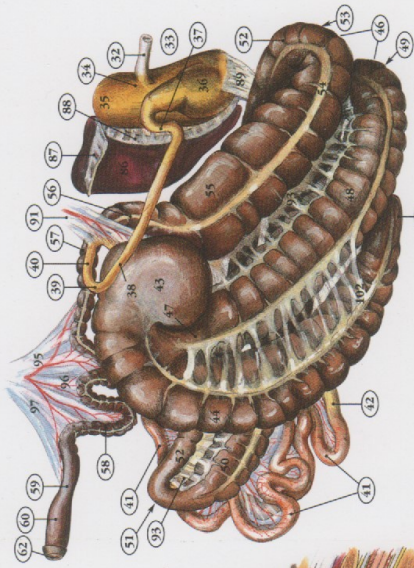
Ghent University, Dept. of Morphology • Design & text: Dr. W. Van Kerckhoven DVM, S. Vermeirwe • Illustrations: Y. De Goster

INTERNAL ORGANS OF THE HORSE



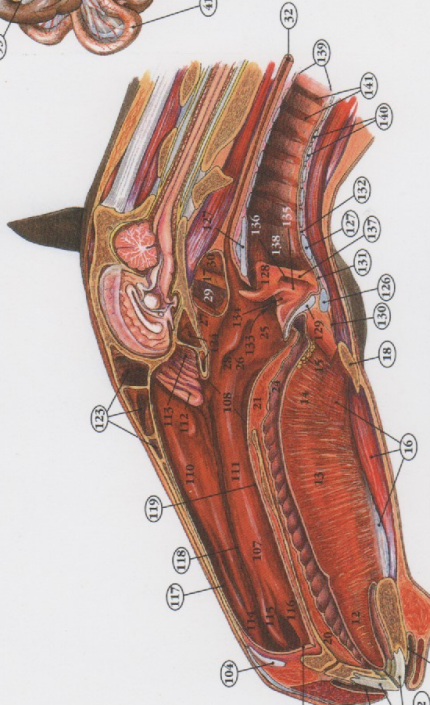
TRANSVERSE SECTION OF THE ABDOMEN - CAUDOVENTRAL VIEW

1. labium superior - upper lip
2. labium inferior - lower lip
3. vestibulum oris - vestibule of the mouth
4. gingiva - gum
5. dentes incisivi - incisors
6. dentes canini - canines
7. dens lupinus - wolf tooth
8. dentes premolares - premolars
9. dentes molares - molars
10. foramen oris - oral cavity
11. linguam oris - oral cavity
12. apex linguae - tip of the tongue
13. corpus linguae - body of the tongue
14. radix linguae - root of the tongue
15. lingua - tongue
16. musculus lingualis - muscles of the tongue
17. stylohyoideum - stylohyoid
18. processus linguales basihyoidei - lingual process of the basihyoid
19. os hyoideum - hyoid bone
20. palatum durum - hard palate
21. palatum molle (velum palatinum) - soft palate
22. musculus palati - muscles of the palate
23. pharynx - pharynx
24. pharynx (larynx) - larynx
25. pharynx - pharynx
26. pars nasalis pharyngis - nasopharynx
27. recessus pharyngicus - pharyngeal recess
28. ostium pharyngicum - auditory tube
29. tuba auditiva - auditory tube
30. diverticulum tubae auditivae - gaurial pouch
31. tunica muscularis pharyngis - muscular coat of the pharynx
32. ventriculus (gaster) - stomach
33. pars cardica - cardiac part of the stomach
34. fundus (saccus ventriculi - fundus (blind sac) of the stomach
35. pars pylorica - pyloric part of the stomach
36. pars descendens duodeni - descending part of the duodenum
37. pars transversa duodeni - transverse part of the duodenum
38. pars ascendens duodeni - ascending part of the duodenum
39. caecum - caecum
40. pars ascendens duodeni - ascending part of the duodenum
41. ileum - ileum
42. caecum - caecum
43. basis caeci - base of the caecum

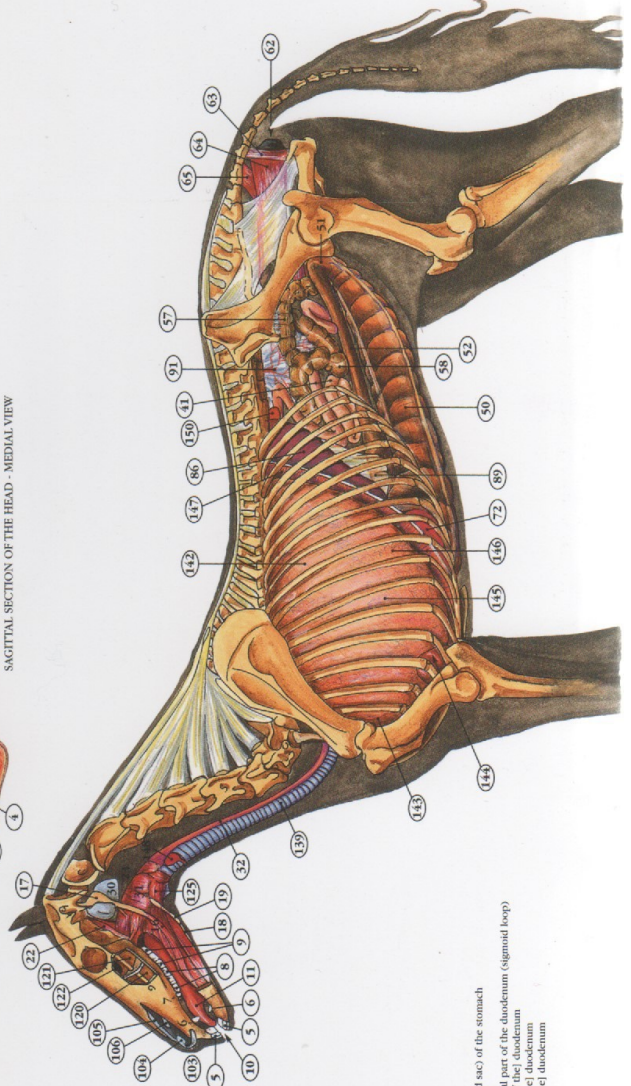


GASTROINTESTINAL TRACT - RIGHT LATERAL VIEW

86. lien - spleen
87. lig. lienorenale - lienorenal (renosplenic) ligament
88. lig. gastrosplenic - gastrosplenic ligament
89. mesocolon transversum - transverse mesocolon
90. mesoduodenum - mesoduodenum
91. mesenterium - mesentery
92. mesojejunum - mesojejunum
93. mesocolon ascendens - ascending mesocolon
94. mesocolon descendens - descending mesocolon
95. mesocolon sigmoidium - sigmoid mesocolon
96. mesocolon sigmoideum - sigmoid mesocolon
97. mesorectum - mesorectum
98. lig. falciforme hepatis - falciform ligament of the liver
99. lig. triangulare dextrum - right triangular ligament
100. lig. triangulare sinistrum - left triangular ligament
101. plica duodenoica - duodenoic fold
102. plica cecocolica - cecocolic fold
103. anus externus - (external) nose
104. cartilago nasalis - cartilage of the nose
105. cartilago nasalis dorsalis - dorsal lateral nasal cartilage
106. cartilago nasalis accessoria medialis - medial accessory nasal cartilage
107. os vomer - vomer
108. os ethmoidale - ethmoid bone
109. septum nasi - nasal septum
110. concha nasalis dorsalis - dorsal nasal concha
111. concha nasalis ventralis - ventral nasal concha
112. concha nasalis media - middle nasal concha
113. concha ethmoidalis - ethmoidal concha
114. plica recta - straight fold
115. plica alaris - alar fold
116. plica basalis - basal fold
117. meatus nasalis superior - superior nasal meatus
118. meatus nasalis medius - middle nasal meatus
119. meatus nasalis inferior - inferior nasal meatus
120. sinus maxillaris rostralis - rostral maxillary sinus
121. sinus maxillaris caudalis - caudal maxillary sinus
122. sinus sphenoidal - sphenoidal sinus
123. sinus frontalis - frontal sinus
124. sinus sphenopalatini - sphenopalatine sinus
125. larynx - larynx
126. cartilago thyroidea - thyroid cartilage
127. cartilago aryepiglottica - aryepiglottic cartilage
128. cartilago aryepiglottica dextra - right aryepiglottic cartilage
129. epiglottis - epiglottis
130. membrana thyrohyoidea - thyrohyoid membrane
131. lig. cricothyroideum - cricothyroid ligament
132. lig. cricoaryepiglotticum - cricoaryepiglottic ligament
133. aditus laryngis - laryngeal entrance
134. plica aryepiglottica - aryepiglottic fold
135. plica vestibularis - vestibular fold
136. ventriculus laryngis - laryngeal ventricle



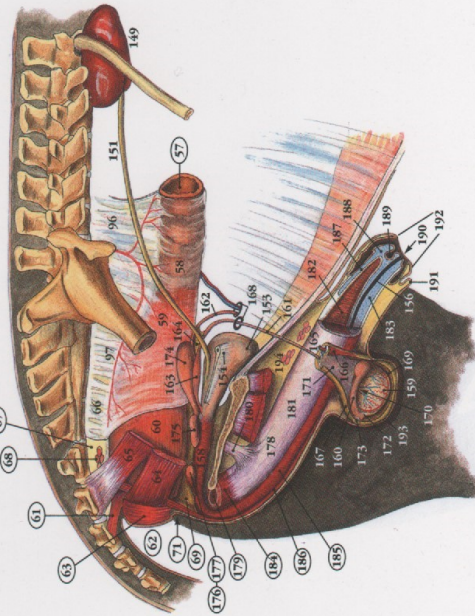
SAGITTAL SECTION OF THE HEAD - MEDIAL VIEW





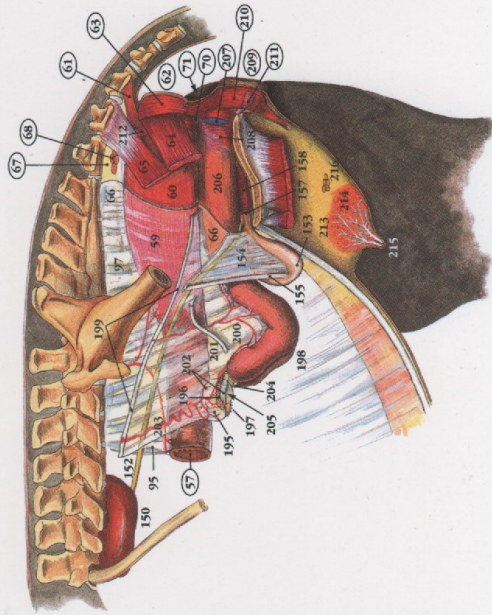
DIGESTIVE AND RESPIRATORY SYSTEMS
LEFT LATERAL VIEW

- 44. corpus cæci - body of the cecum
- 45. apex cæci - apex of the cecum
- 46. colon ascendens (colon caecum) - ascending colon (large colon) (= 47)
- 47. colon ventrale dextrum - right ventral colon
- 48. colon ventrale dextrum - right ventral colon
- 49. flexura sternalis - sternal flexure
- 50. colon ventrale sinister - left ventral colon
- 51. flexura pelvica - pelvic flexure
- 52. colon ventrale sinister - left ventral colon
- 53. flexura diaphragmatica - diaphragmatic flexure
- 54. colon dorsale dextrum - right dorsal colon
- 55. ampulla coli - colic ampulla
- 56. colon descendens (colon teres) - descending colon (small colon)
- 57. colon sigmoides - sigmoid colon
- 58. rectum - rectum
- 59. ampulla recti - rectal ampulla
- 60. anus - anus
- 61. sphincter ani externus - external anal sphincter
- 62. anus - anus
- 63. m. levator ani - levator ani muscle
- 64. m. levator ani - levator ani muscle
- 65. m. coccygeus - coccygeus muscle
- 66. m. coccygeus - coccygeus muscle
- 67. spatium retroperitoneale - retroperitoneal space
- 68. lymphonodi aortales - aortic lymph nodes
- 69. centrum tendinum perinei (corpus perineale) - tendinous center of the perineum (perineal body)
- 70. processus clitoridis - clitoral process
- 71. perineum - perineum
- 72. hepatis - liver
- 73. lobus hepatis sinister lateralis - left lateral lobe of the liver
- 74. lobus hepatis sinister medialis - left medial lobe of the liver
- 75. lobus quadratus - quadrate lobe
- 76. lobus hepatis dexter medialis - right medial lobe of the liver
- 77. lobus hepatis dexter lateralis - right lateral lobe of the liver
- 78. processus caudatus - caudate process
- 79. processus caudatus - caudate process
- 80. pancreas - pancreas
- 81. lobus pancreatis dexter - right lobe of the pancreas
- 82. corpus pancreatis - body of the pancreas
- 83. lobus pancreatis sinister - left lobe of the pancreas
- 84. ductus pancreaticus - pancreatic duct (around the portal vein)
- 85. ductus pancreaticus - pancreatic duct



MALE GENITAL ORGANS - RIGHT LATERAL VIEW

- 136. ventriculus laryngis - laryngeal ventricle
- 137. plica vocalis - vocal fold
- 138. cavum infraglotticum - infraglottic cavity
- 139. trachea - trachea (windpipe)
- 140. cartilago cricoidalis - cricoid cartilage
- 141. ligamenta annularia - annular ligaments
- 142. pulm. sinister - left lung
- 143. lobus cranialis - cranial lobe of the lung
- 144. lobus caudalis - caudal lobe of the lung
- 145. lobus cranialis - cranial lobe of the lung
- 146. plicura - plicura
- 147. diaphragma - diaphragm
- 148. glandula thyroidea - thyroid gland
- 149. vesica urinaria - urinary bladder
- 150. ureter sinister - left ureter
- 151. ureter dexter - right ureter
- 152. vesica urinaria - urinary bladder
- 153. vesica urinaria - urinary bladder
- 154. lig. arter. vascae - round ligament of the bladder
- 155. urethra masculina - male urethra
- 156. urethra feminina - female urethra
- 157. m. urethralis - urethralis muscle
- 158. m. urethralis - urethralis muscle
- 159. m. urethralis - urethralis muscle
- 160. epididymis dexter - right epididymis
- 161. ductus deferens dexter - right deferent duct
- 162. ductus deferens sinister - left deferent duct
- 163. ampulla deferentis - ampulla of the deferent duct
- 164. plicura - plicura
- 165. m. cremaster - cremaster muscle
- 166. m. cremaster - cremaster muscle
- 167. tunica vaginalis - vaginal tunic
- 168. corpus testis - body of the testis
- 169. cavum vaginale - vaginal cavity
- 170. bursa testicularis - testicular bursa
- 171. mesorchium - mesorchium
- 172. lig. testis proprium - proper ligament of the testis
- 173. lig. canale epididymalis - ligament of the tail of the epididymis

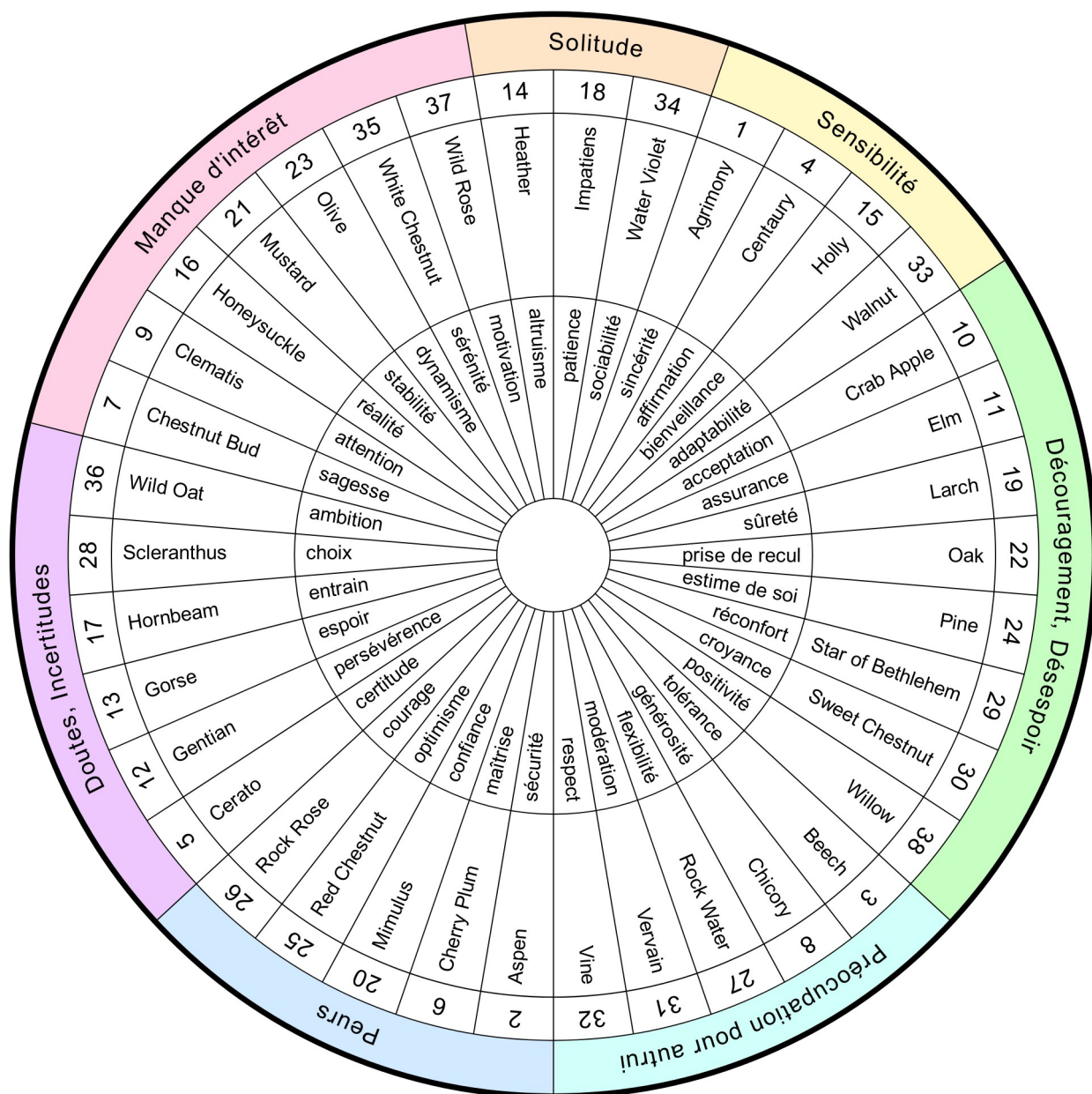


FEMALE GENITAL ORGANS - LEFT LATERAL VIEW

- 174. glandula vesicularis dextra - right vesicular gland (seminal vesicle)
- 175. prostata - prostate
- 176. glandula bulbourethralis dextra - right bulbourethral gland
- 177. glandula bulbourethralis sinistra - left bulbourethral gland
- 178. penis - penis
- 179. crura penis - crura of the penis
- 180. lig. suspensorium penis - suspensory ligament of the penis
- 181. corpus penis - body (shaft) of the penis
- 182. corpus penis - body (shaft) of the penis
- 183. corpus spongiosum penis - spongy body of the penis
- 184. m. ischio cavernosus - ischio cavernosus muscle
- 185. m. bulbospongiosus - bulbospongiosus muscle
- 186. m. bulbospongiosus - bulbospongiosus muscle
- 187. glans penis - glans of the penis
- 188. corpus spongiosum glandis - spongy body of the glans
- 189. sinus urethralis - urethral sinus
- 190. osodium urethrae externum - external urethral orifice
- 191. plicura preputialis - preputial fold
- 192. plicura preputialis - preputial fold
- 193. scrotum - scrotum
- 194. lymphonodi seriales - serosal lymph nodes
- 195. ovarium sinister - left ovary
- 196. ovarium sinister - left ovary
- 197. fimbriae tubae - fimbriae of the uterine tube
- 198. uterus - uterus
- 199. lig. latum uteri - broad ligament of the uterus
- 200. lig. ovarium - mesovarium
- 201. lig. ovarium - mesovarium
- 202. mesosalpinx - mesosalpinx
- 203. mesometrium - mesometrium
- 204. lig. ovari proprium - proper ligament of the ovary
- 205. vagina - vagina
- 206. vagina - vagina
- 207. bulbos vesibularis - vestibular bulb
- 208. m. constrictor vesibularis - constrictor vesibular muscle
- 209. valva (pudendum femininum) - valva
- 210. m. constrictor vesibularis - constrictor vesibular muscle
- 211. clitoris - clitoris
- 212. m. retractor clitoridis - retractor clitoridis muscle
- 213. mamma (uber) - mammary gland (udder)
- 214. corpus mammae - body of the mammary gland
- 215. lymphonodi mammarii - mammary lymph nodes

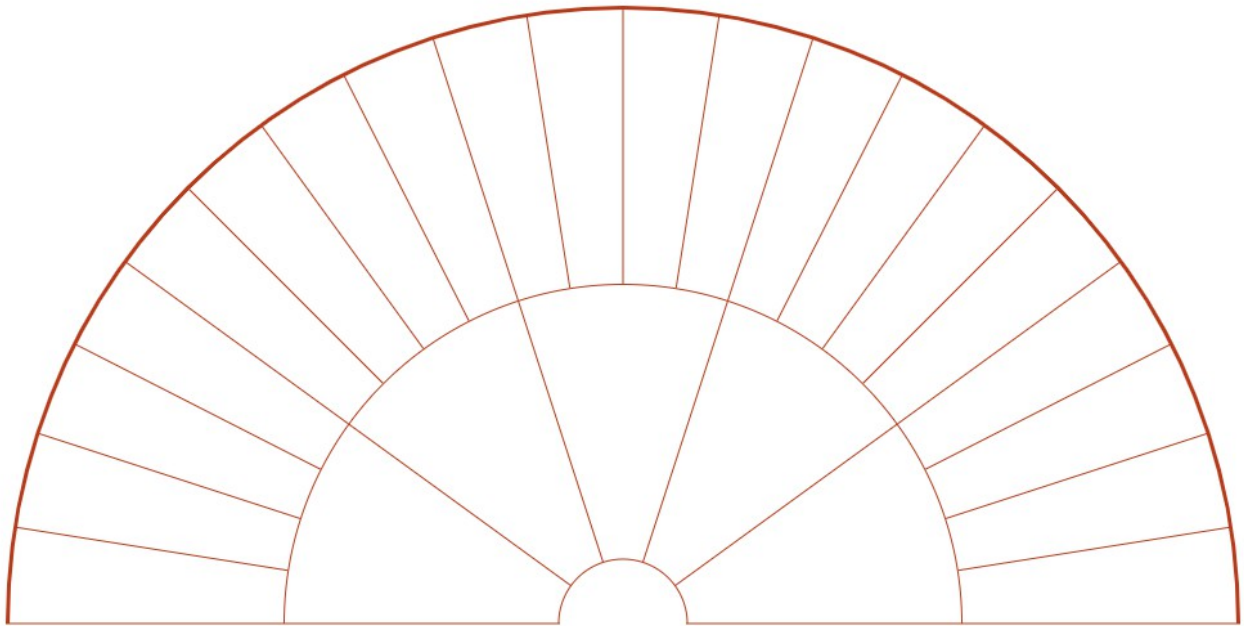


Fleurs de Bach

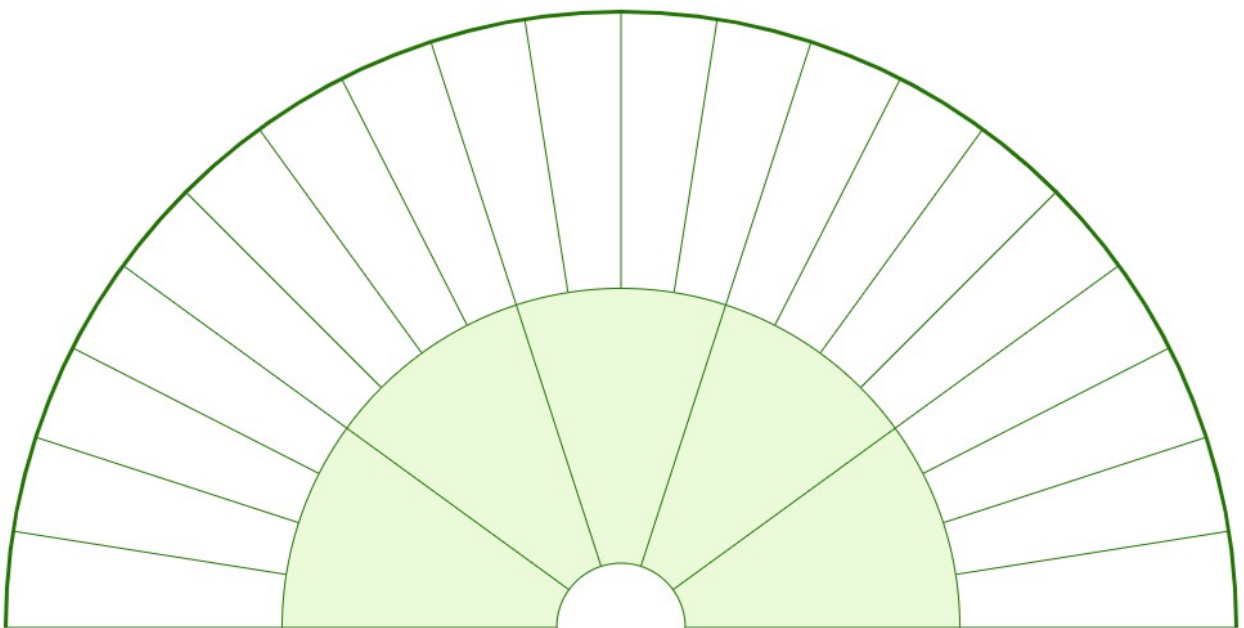


créé avec subtil.net

Candran de radiesthésie

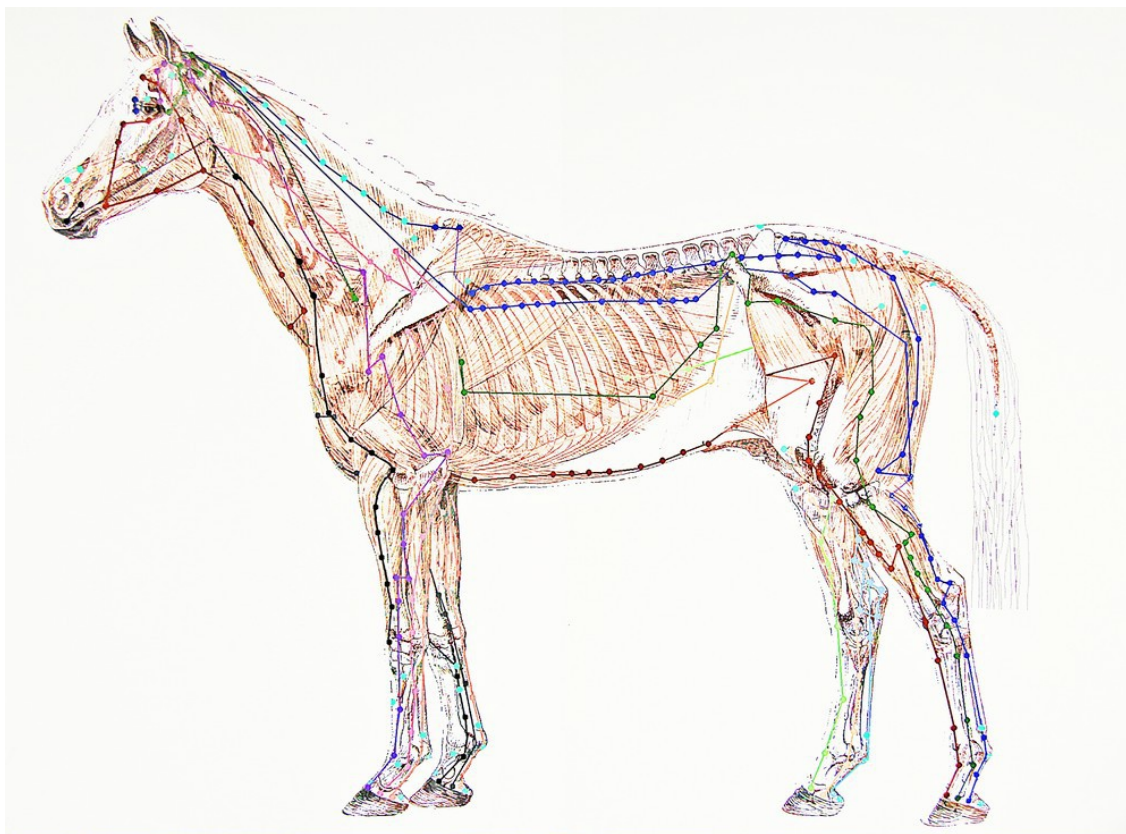


créé avec subtil.net

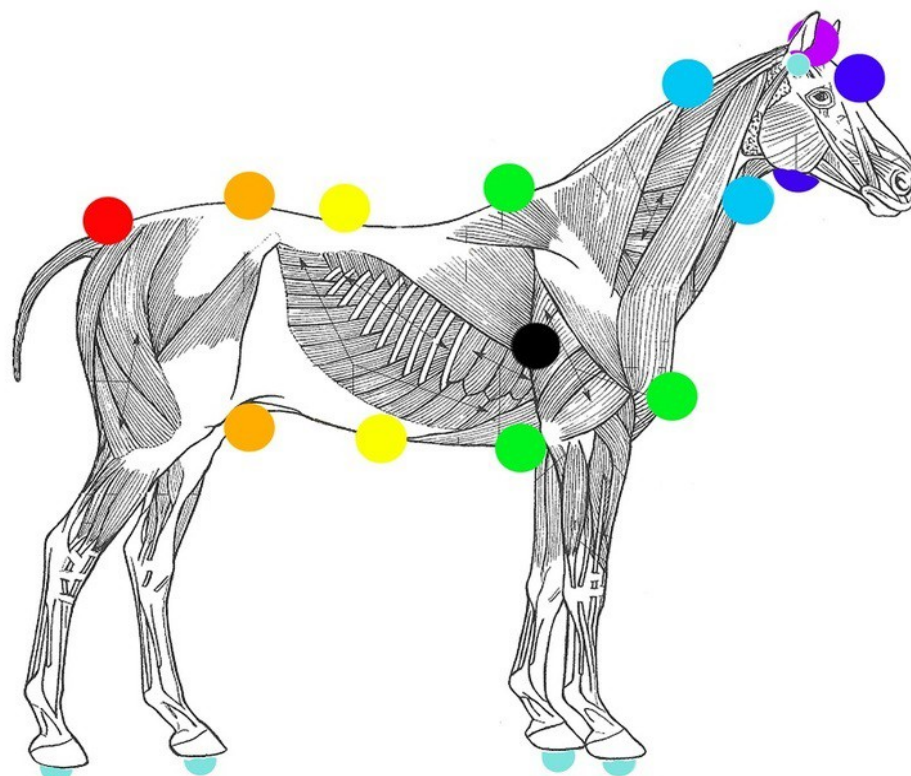


créé avec subtil.net

Méridiens



Chakras



Notes

Notes

Bien Être Cheval



www.bien-etre-cheval.net

Ebook offert par

Ariane Delafontaine

076 389 49 59

Téléchargement

<https://ad-edition.kneo.me/content/23dd1uio/>

www.bien-etre-cheval.net